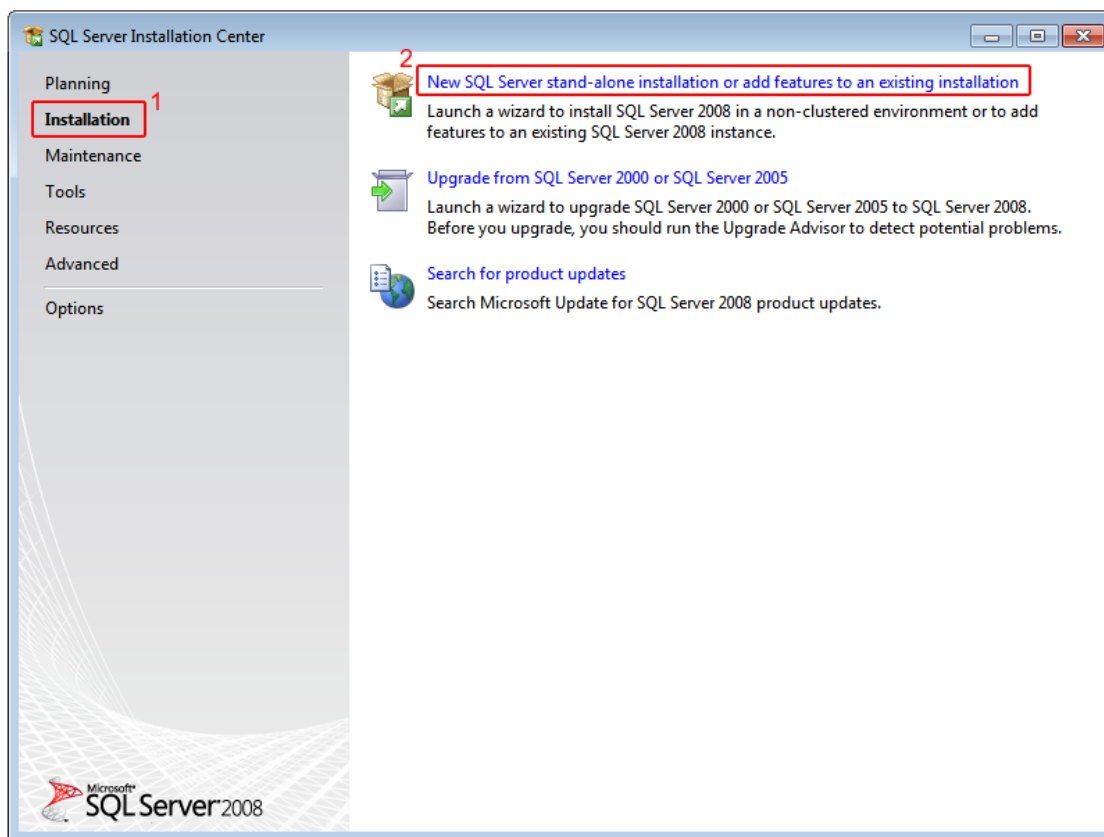


SQL Server Installation Guide

1. From the Visor 360 installation CD\USB Key, open the “Access” folder and install the *Access Database Engine*.
2. Open *Visor 360 V2.0* folder and double click on *Setup*. Visor 360 will install .NET Framework 3.5 automatically. This component is required prior to installing SQL Server.
3. Download the latest SQL Server 2008 Express edition from Microsoft website.
4. Double click on the SQL installation file and follow the procedure below:

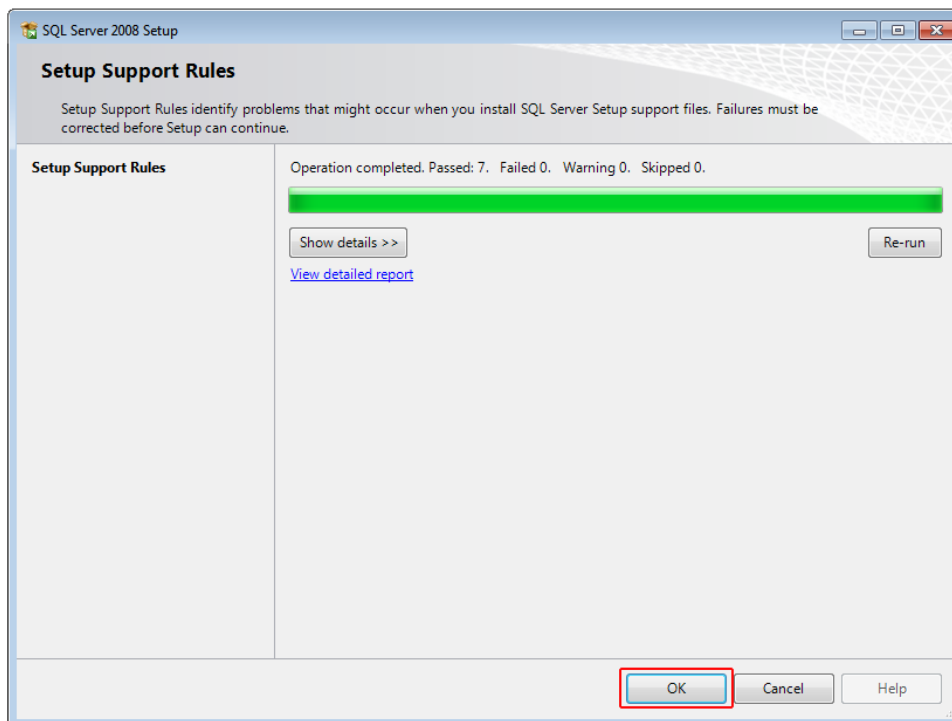


Press on the *Installation* tab to the left, and then click on the *New SQL Server installation* option.

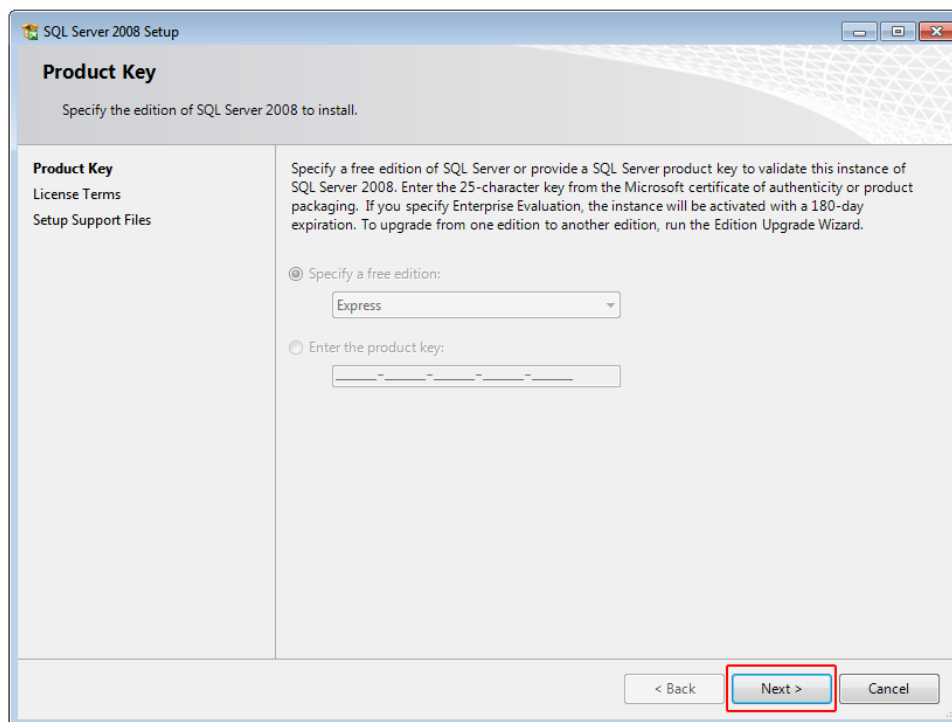
Immotec Systems, Inc.

SQL Server 2008 Installation Document

Click *OK*.



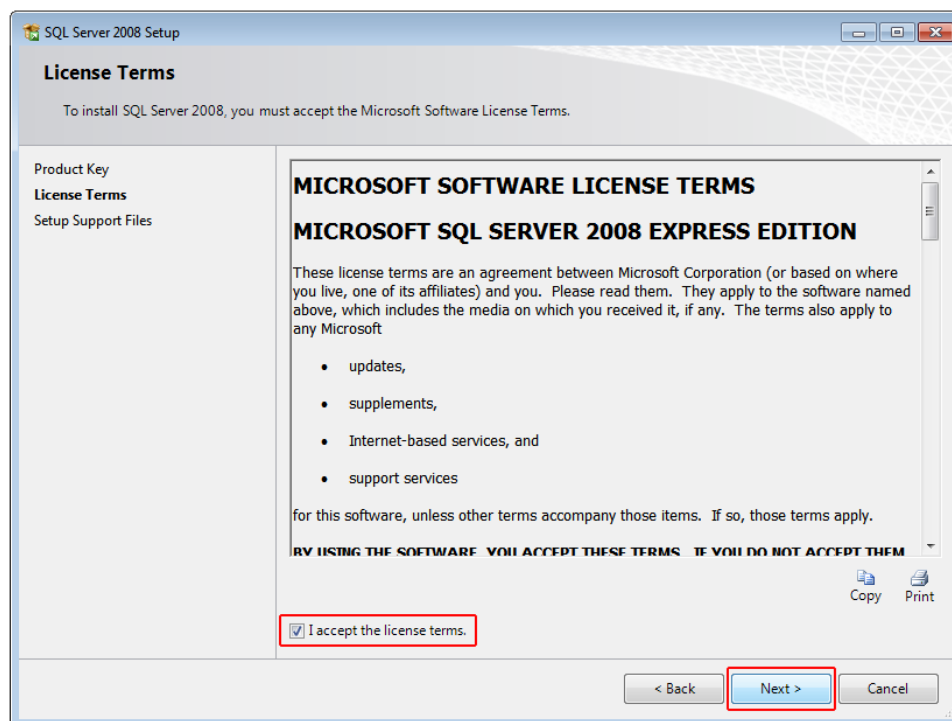
Click *Next*.



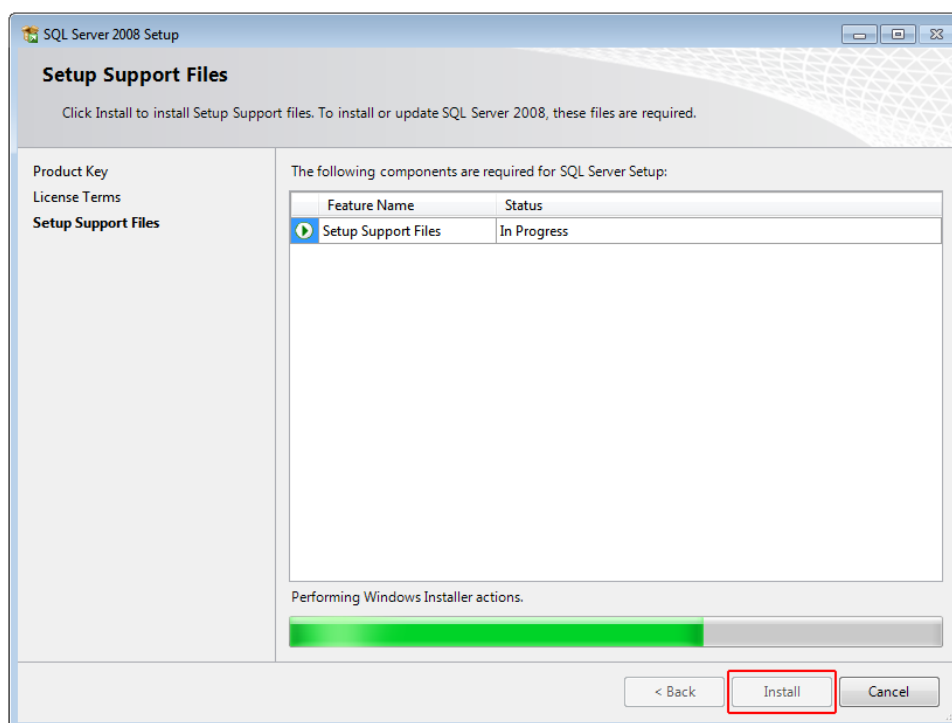
Immotec Systems, Inc.

SQL Server 2008 Installation Document

Select checkbox “I accept the license terms” and press *Next*.



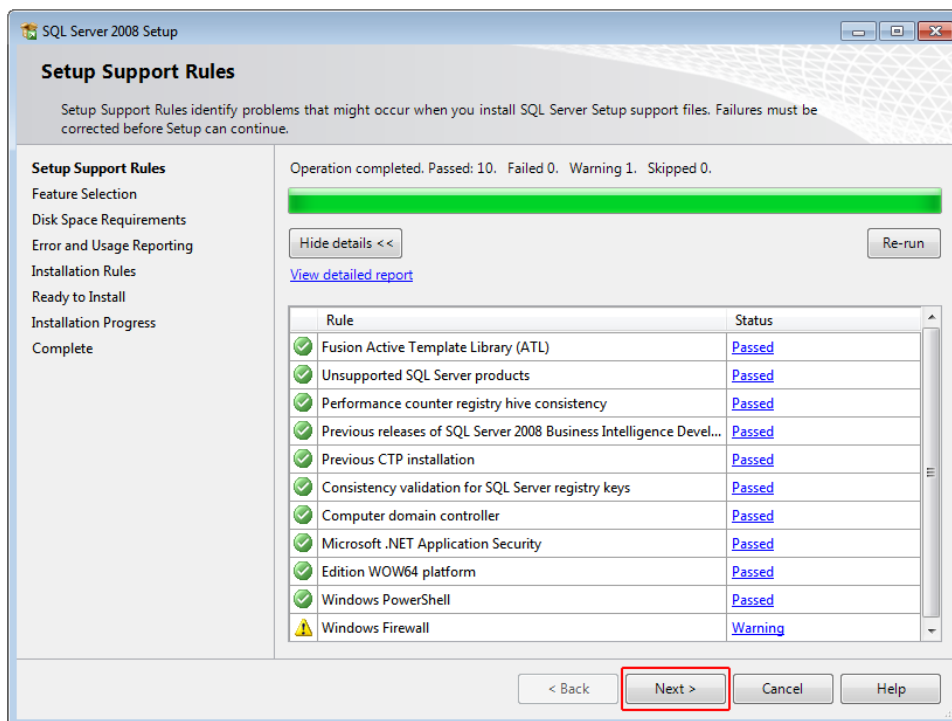
Press *Install*. Setup Support Files in progress. Wait for the installation to finish.



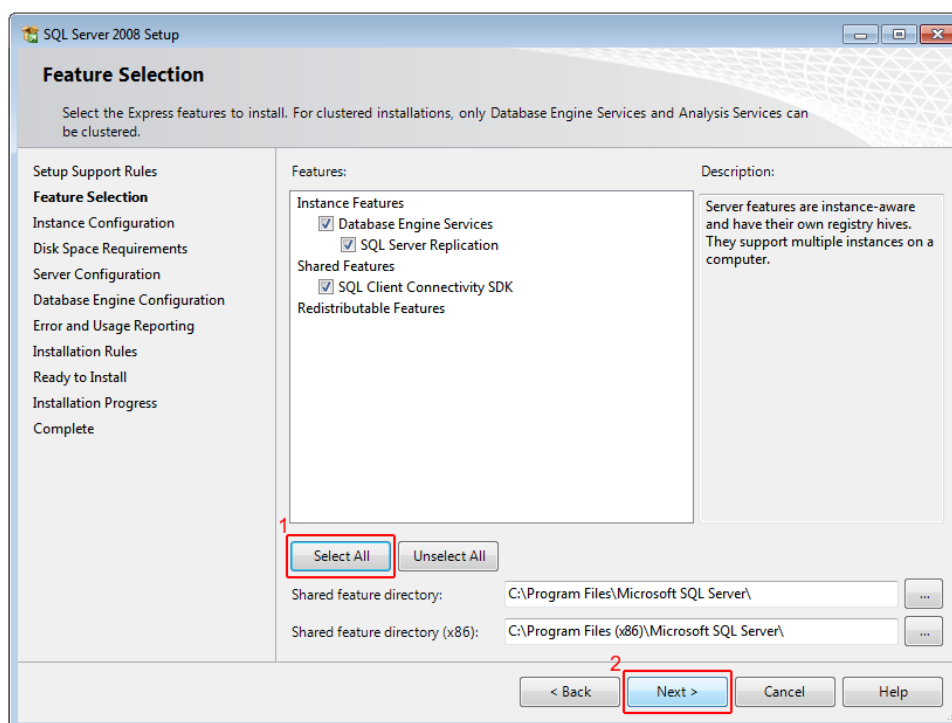
Immotec Systems, Inc.

SQL Server 2008 Installation Document

Verify that there are no Failed Rules, and then click **Next**.



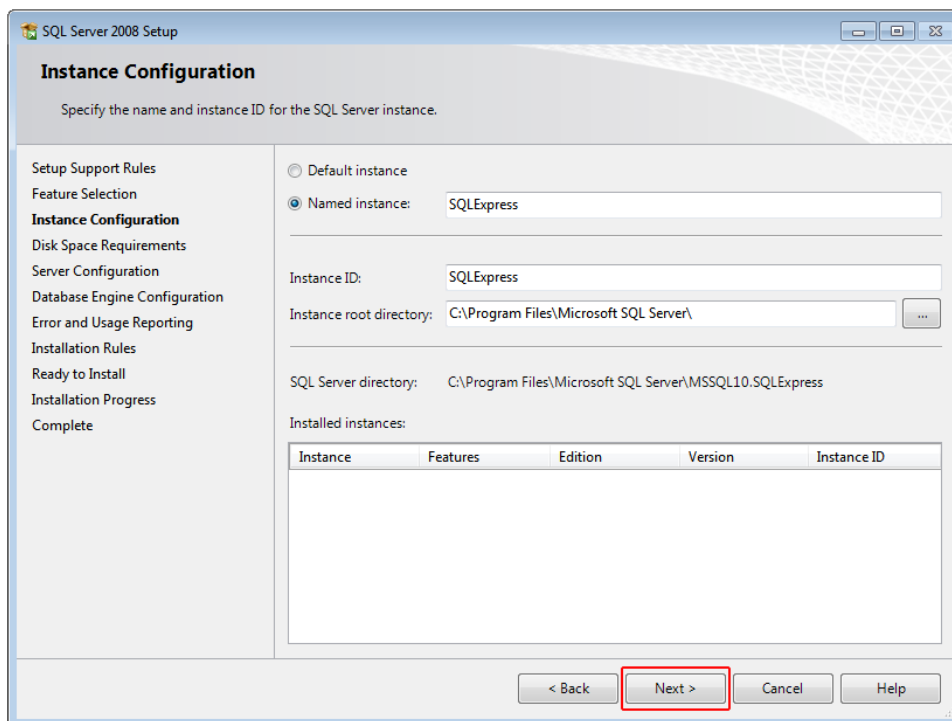
In the *Feature Selection* press on *Select All* and then click **Next**.



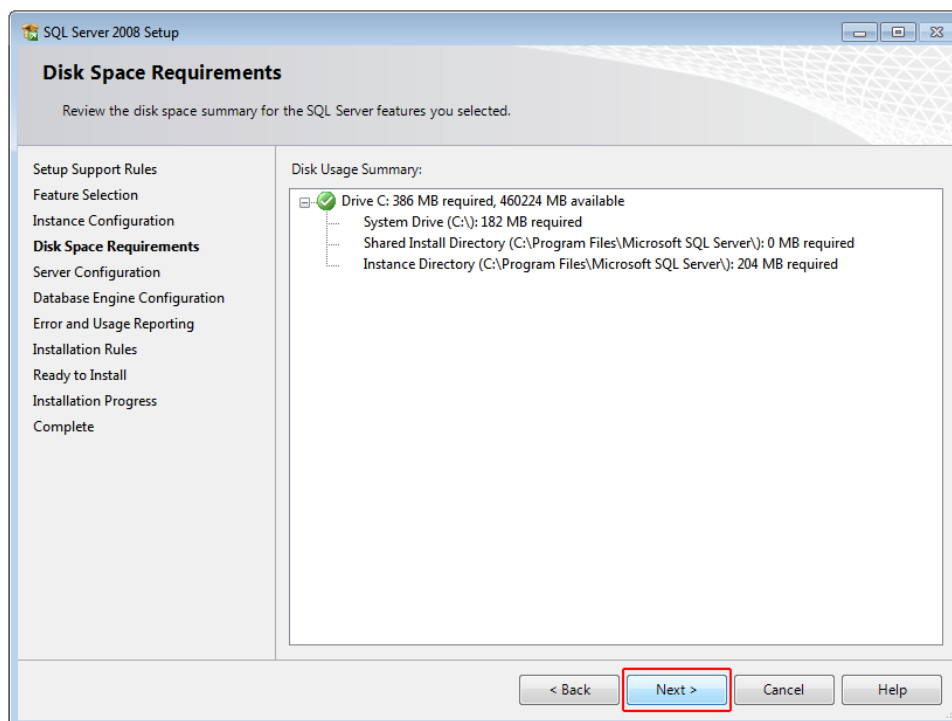
Immotec Systems, Inc.

SQL Server 2008 Installation Document

Type in your *Named Instance* (Database name) and press *Next*.



Click *Next*.



Immotec Systems, Inc.

SQL Server 2008 Installation Document

In the *SQL Server Database Engine* section select *NT AUTHORITY\NETWORK SERVICE*.

In the *SQL Server Browser* section select *Automatic* for *Startup Type*.

Press Next.

SQL Server 2008 Setup

Server Configuration

Specify the configuration.

Setup Support Rules
Feature Selection
Instance Configuration
Disk Space Requirements
Server Configuration
Database Engine Configuration
Error and Usage Reporting
Installation Rules
Ready to Install
Installation Progress
Complete

Service Accounts Collation

Microsoft recommends that you use a separate account for each SQL Server service.

Service	Account Name	Password	Startup Type
SQL Server Database Engine	NT AUTHORITY\NETW...		Automatic

Use the same account for all SQL Server services

These services will be configured automatically where possible to use a low privilege account. On some older Windows versions the user will need to specify a low privilege account. For more information, click Help.

Service	Account Name	Password	Startup Type
SQL Server Browser	NT AUTHORITY\LOCA...		Automatic

< Back Next > Cancel Help

Immotec Systems, Inc.

SQL Server 2008 Installation Document

Select “Mixed Mode”. Enter password and confirmation password. Press on *Add Current User*.

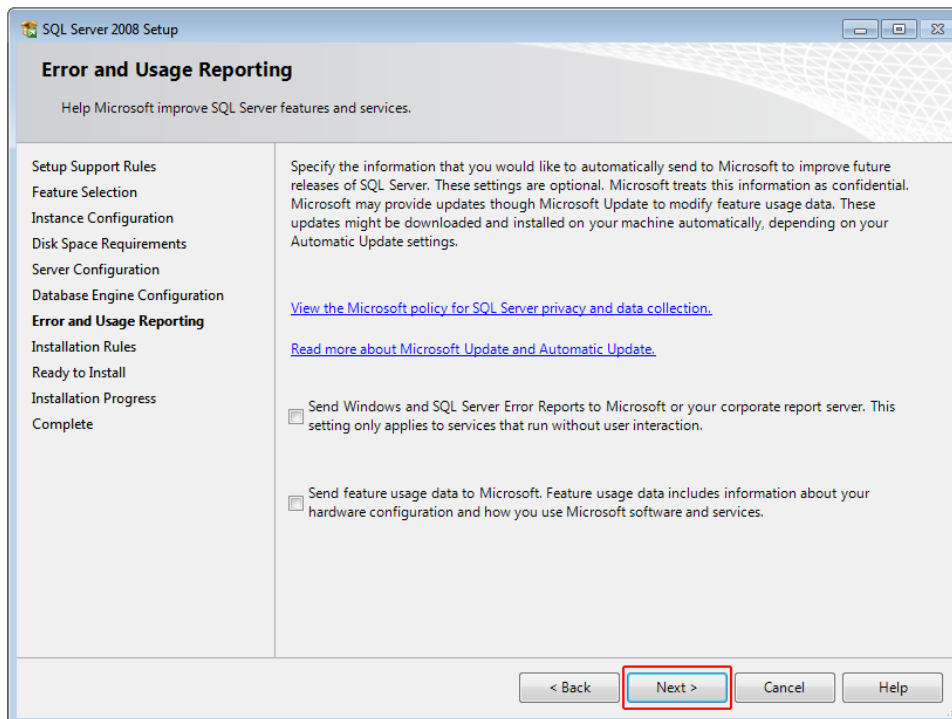
Click *Next*.

The screenshot shows the 'Database Engine Configuration' window in the SQL Server 2008 Setup. The 'Account Provisioning' tab is active. The 'Authentication Mode' section has 'Mixed Mode (SQL Server authentication and Windows authentication)' selected, which is highlighted with a red box and a red number 1. Below this, the 'Built-in SQL Server system administrator account' section has 'Enter password:' and 'Confirm password:' fields, both with masked passwords (four dots). A red box and a red number 2 highlight the 'Add Current User' button. At the bottom, a red box and a red number 3 highlight the 'Next >' button. The left sidebar shows the installation progress, with 'Database Engine Configuration' highlighted. The right sidebar shows the 'Specify SQL Server administrators' section with a list containing 'User-PC\User (User)' and a note that 'SQL Server administrators have unrestricted access to the Database Engine'.

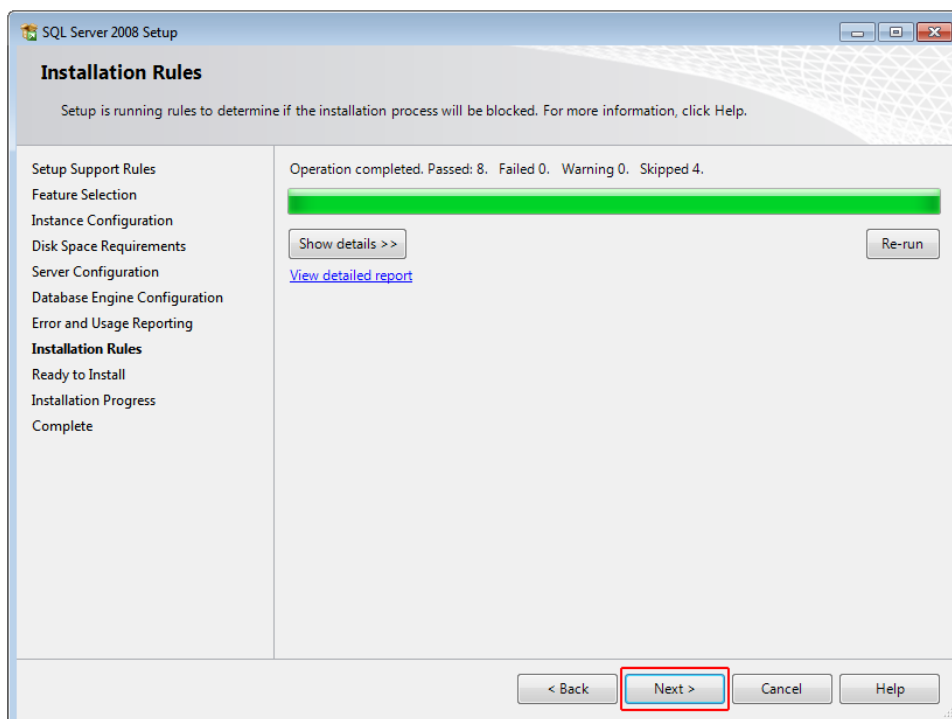
Immotec Systems, Inc.

SQL Server 2008 Installation Document

Click *Next*.



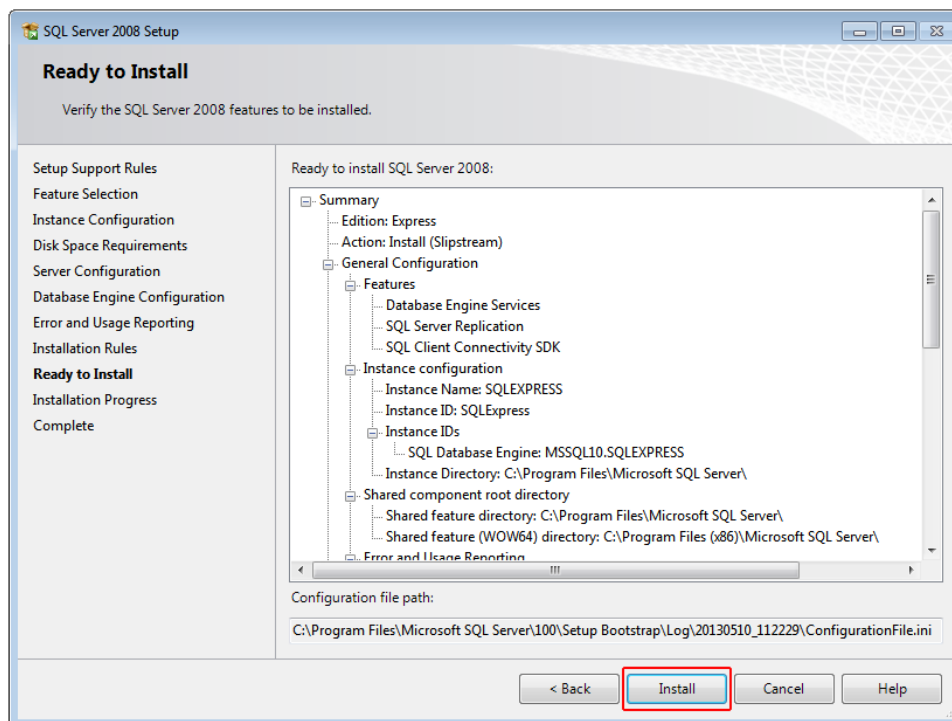
Click *Next*.



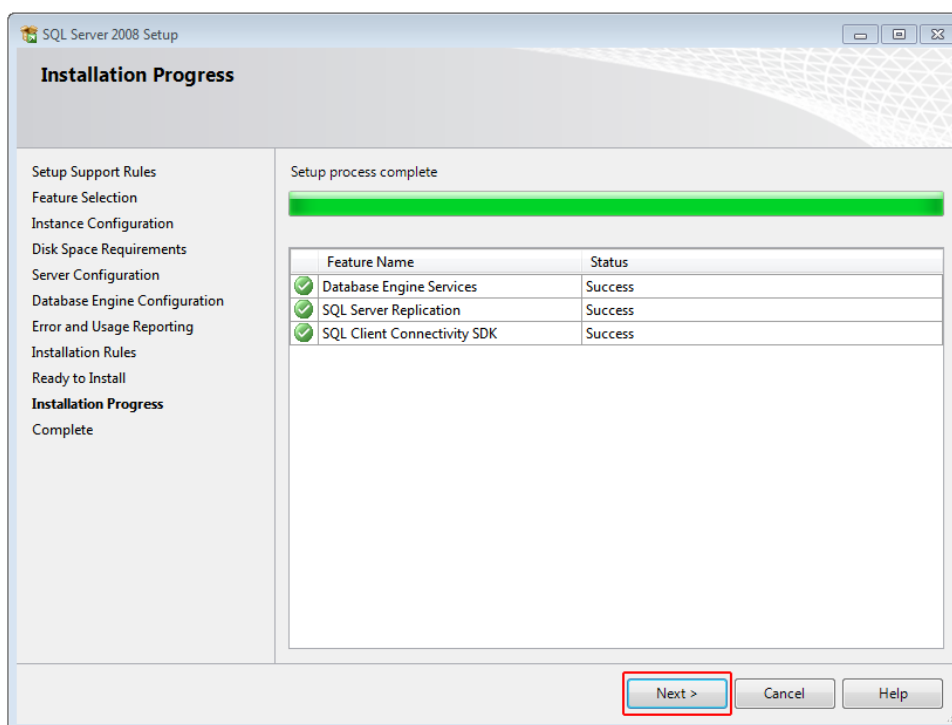
Immotec Systems, Inc.

SQL Server 2008 Installation Document

SQL Server 2008 is ready to install. Press on *Install*.



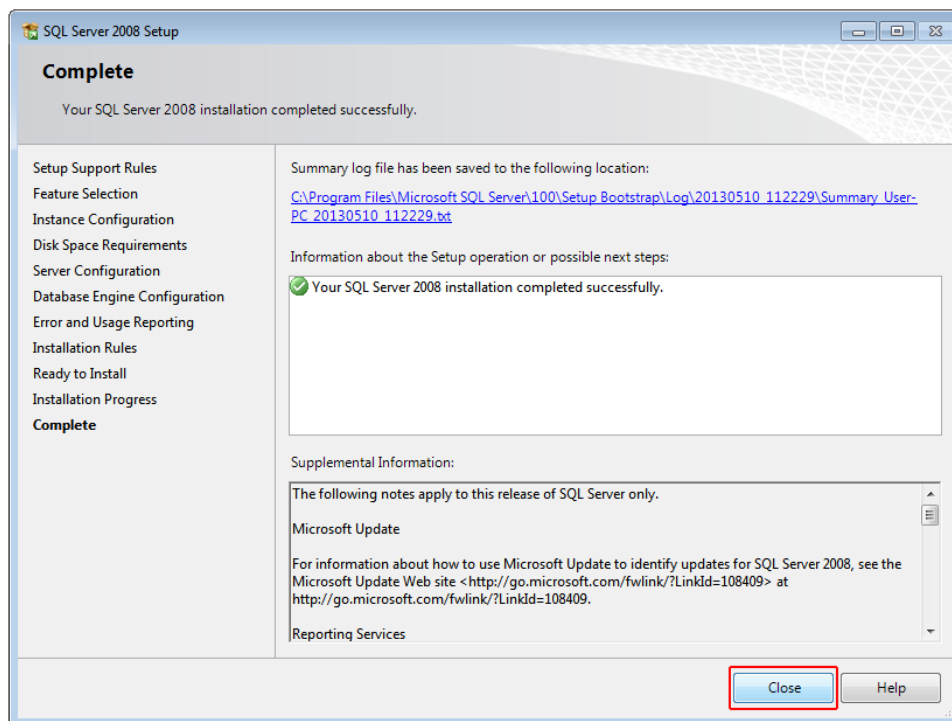
Installation in Progress. Wait for installation to end and press *Next*.



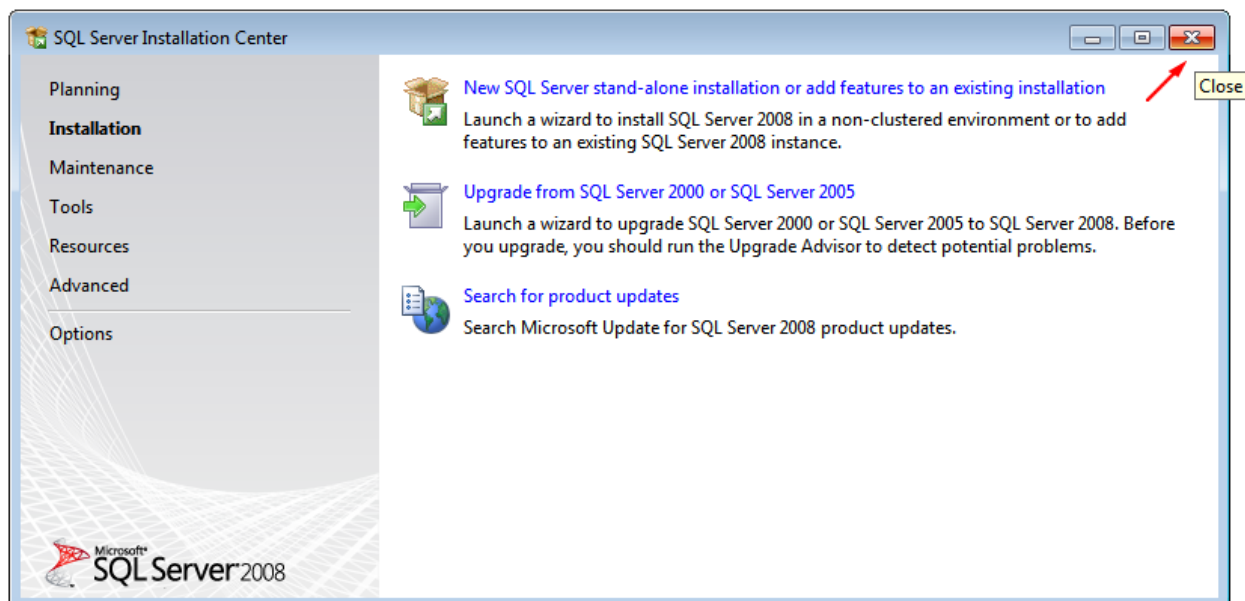
Immotec Systems, Inc.

SQL Server 2008 Installation Document

Installation is complete. Press *Close*.



Close window.

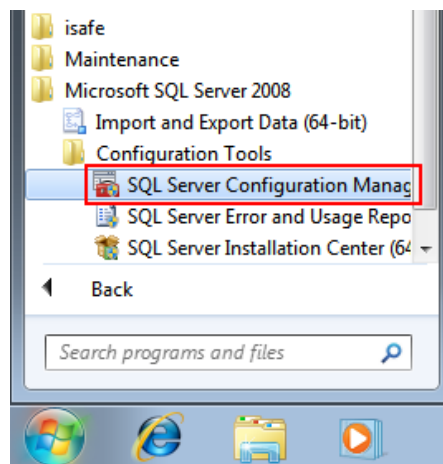


Immotec Systems, Inc.

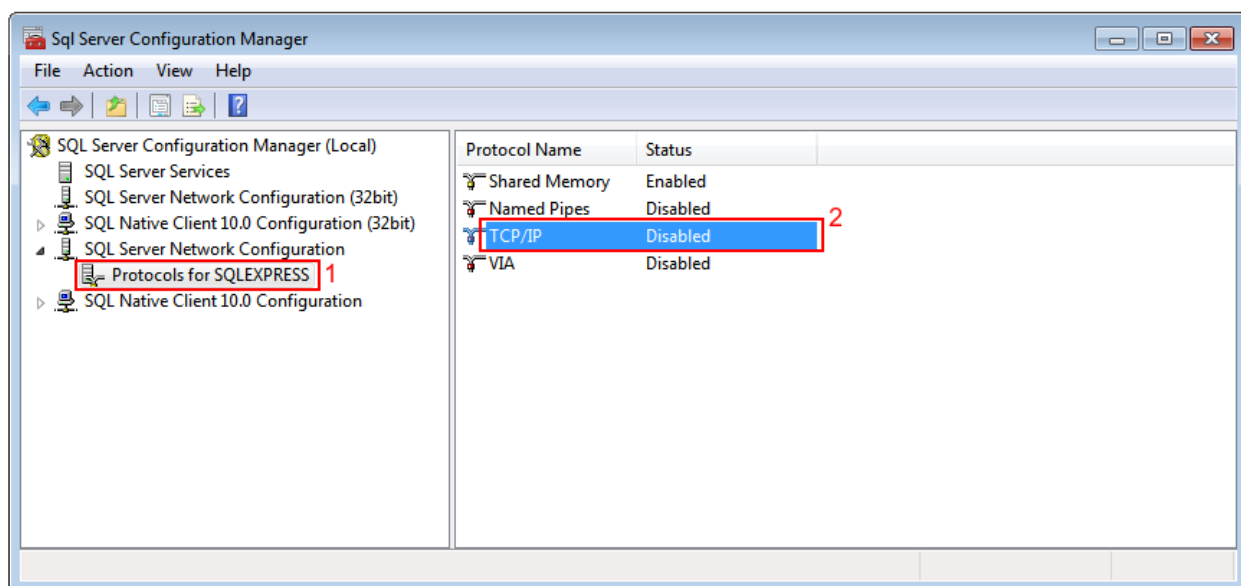
SQL Server 2008 Installation Document

In order to connect remote clients, you would need to setup this feature, please follow the following procedure:

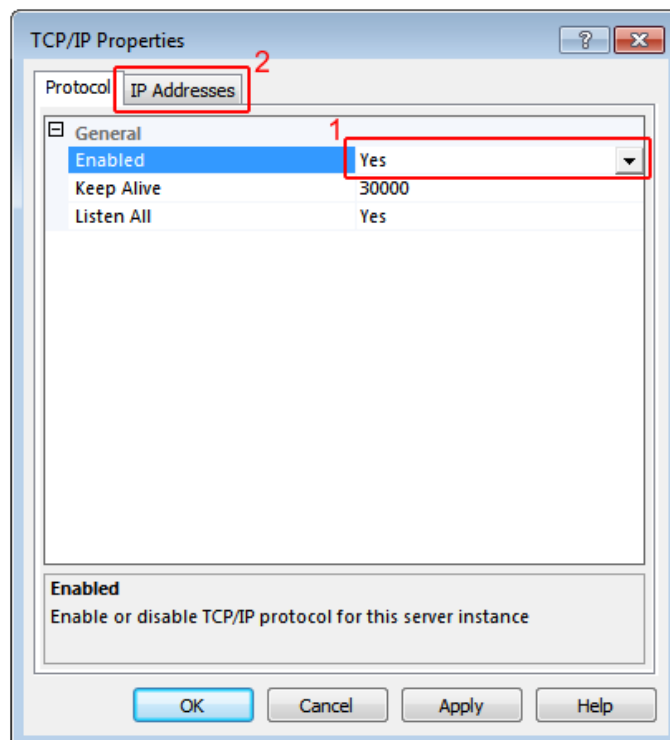
From the *Start* menu, click on *Microsoft SQL Server 2008, Configuration Tools* and then press on “*SQL Server Configuration Manager*”.



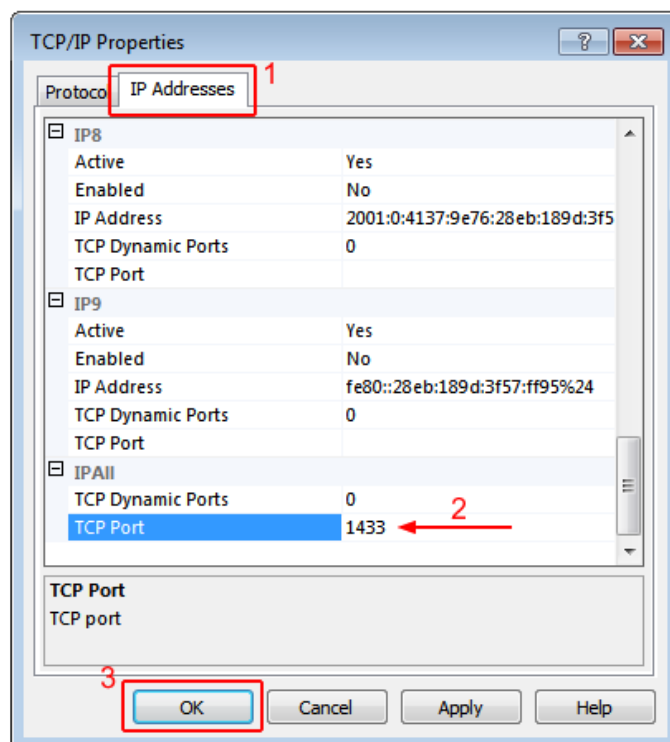
Under *SQL Server Network Configuration*, click on *Protocols for SQLEXPRESS*. Then double click on *TCP/IP*.



First select *Yes* to enable *TCP/IP*, and then press on the *IP Addresses* tab.



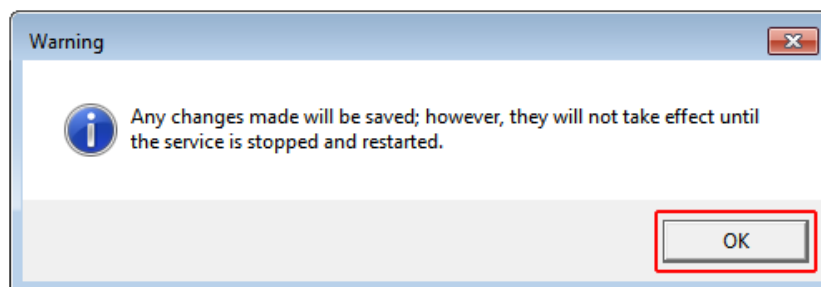
In the *IP Addresses* tab, fill the *TCP port*. For our example we will use port 1433, and then click *OK*.



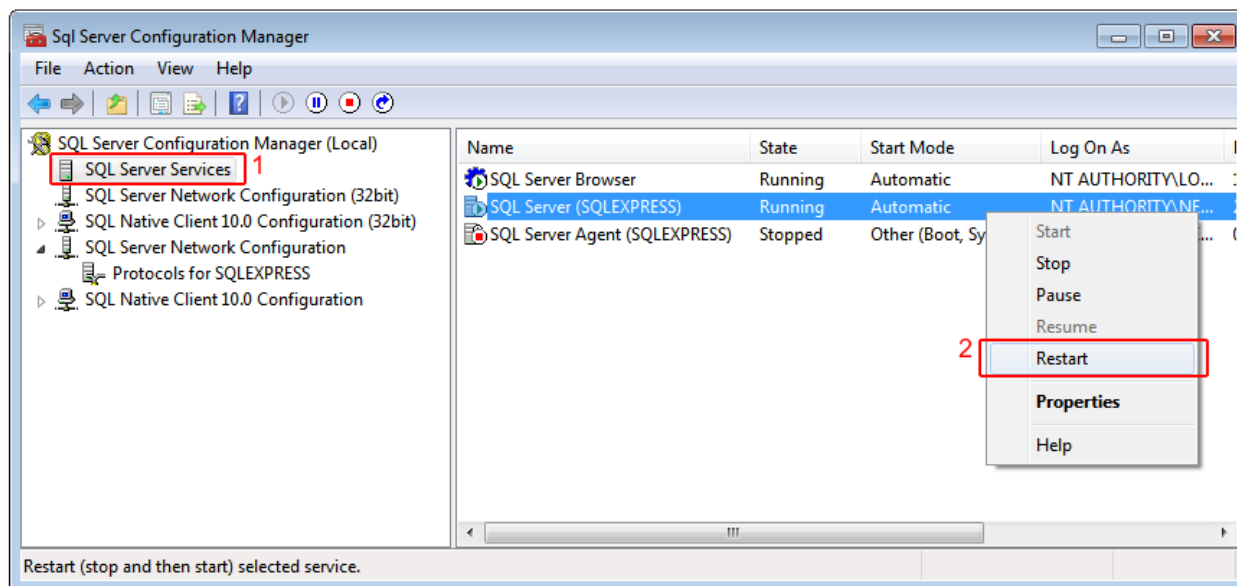
Immotec Systems, Inc.

SQL Server 2008 Installation Document

You will get a “Warning” message notifying that changes will take effect only after your Database service has been restarted. Press *OK*.



Click on *SQL Server Services* section, right click on “*SQL Server (SQLEXPRESS)*” then press on *Restart*.

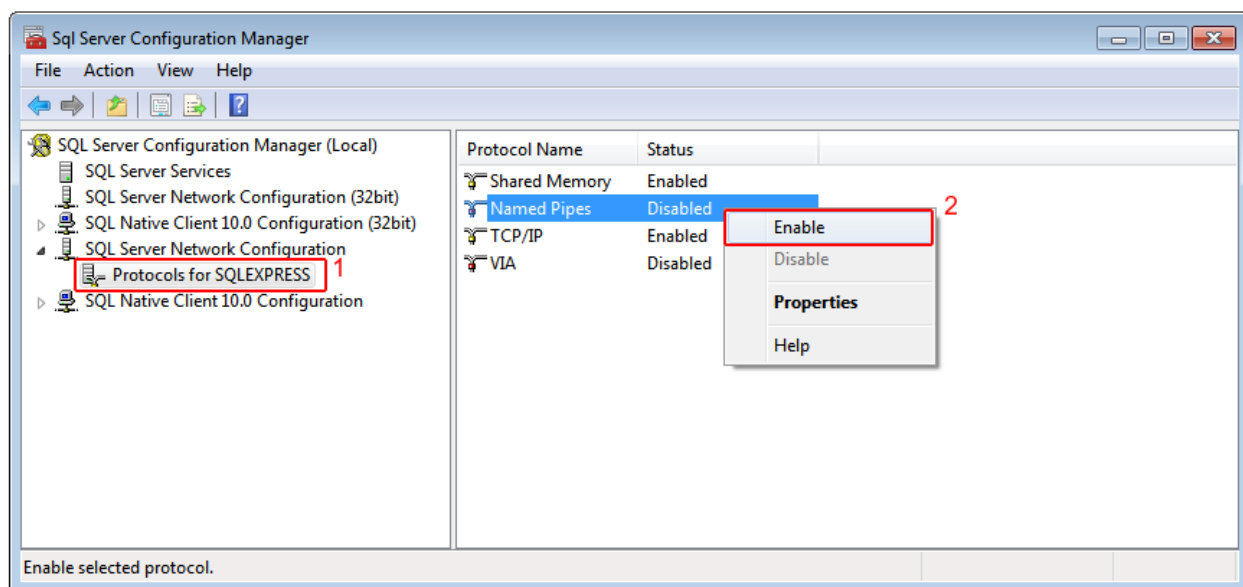


Your Database Service will restart.

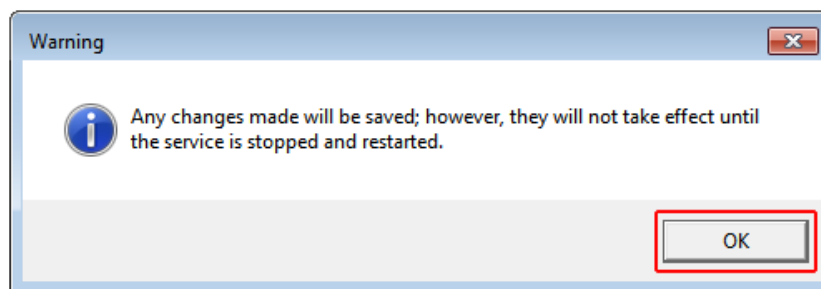
Immotec Systems, Inc.

SQL Server 2008 Installation Document

Under *SQL Server Network Configuration*, click on *Protocols for SQLEXPRESS*. Then right click on *Named Pipes* and press *Enable*.



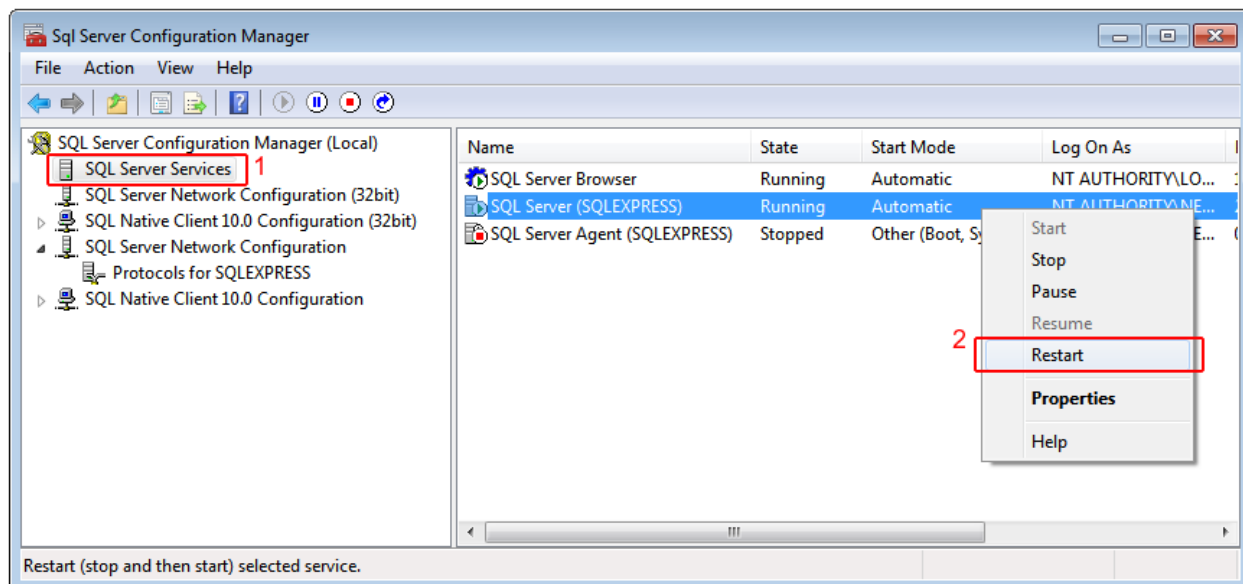
You will get a “Warning” message notifying that changes will take effect only after your Database service has been restarted. Press **OK**.



Immotec Systems, Inc.

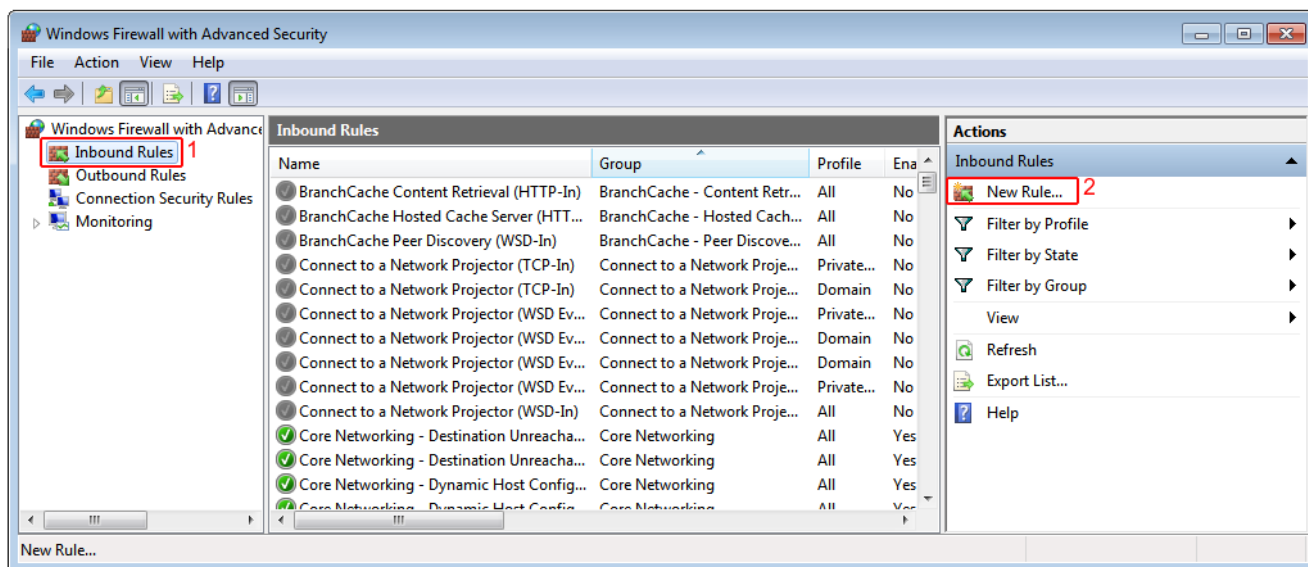
SQL Server 2008 Installation Document

Click on *SQL Server Services* section, right click on “*SQL Server (SQLEXPRESS)*” then press on *Restart*.



Your Database Service will restart.

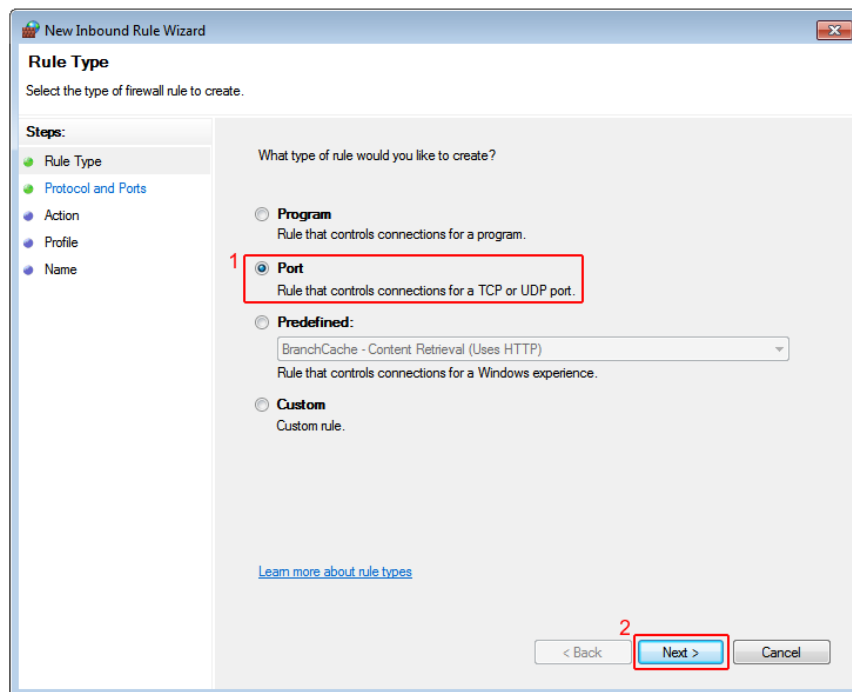
If your computer has a firewall, and it is enabled, please follow the following procedure: From the *Control Panel*, open the *firewall*, select the “*Advanced Settings*” tab on the left, click on *Inbound Rules* and then click *New Rule...*



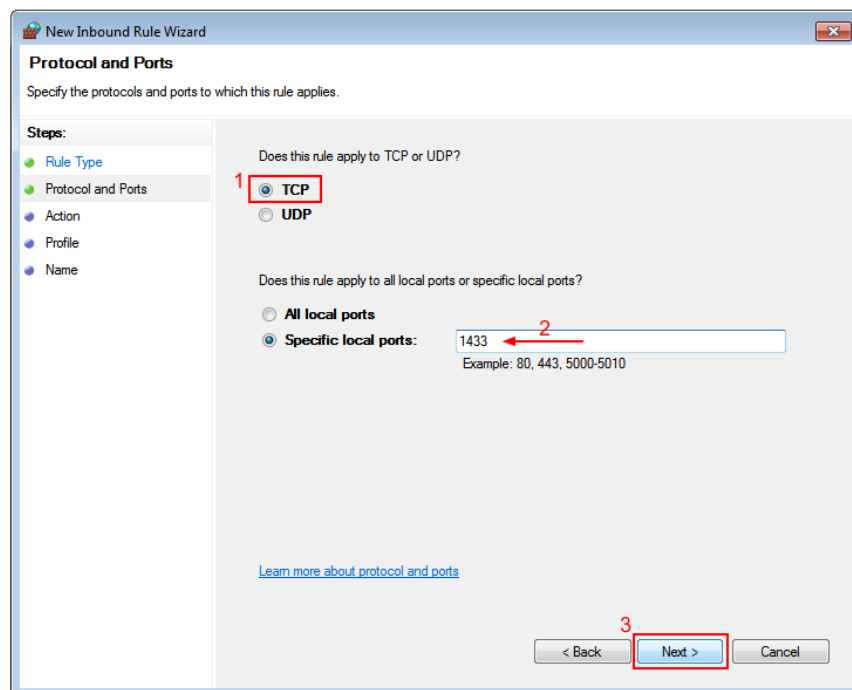
Immotec Systems, Inc.

SQL Server 2008 Installation Document

Select *Port* and click *Next*.



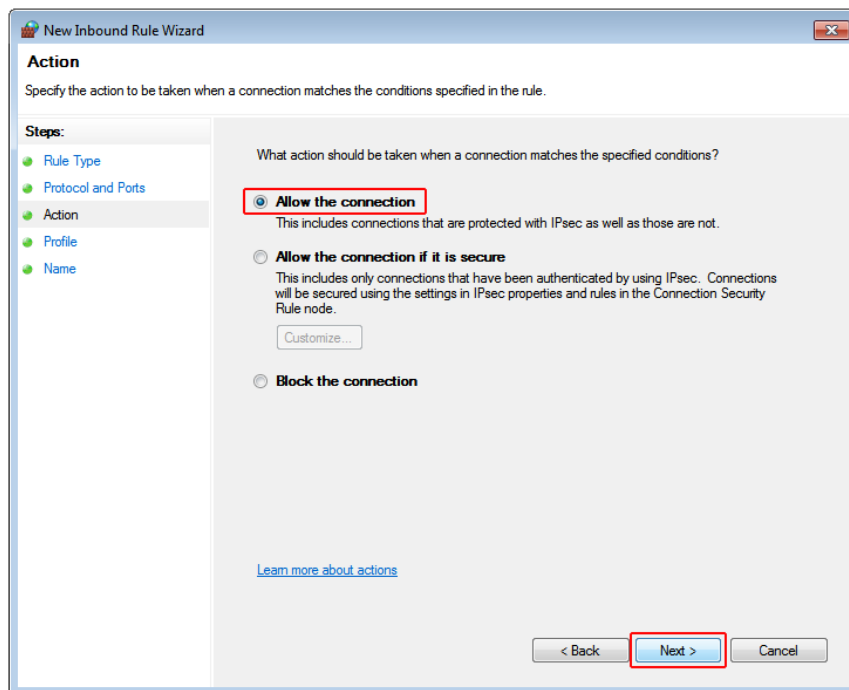
Select *TCP* and Type in the port number 1433 (or the port that you used in the previous steps), and then press *Next*.



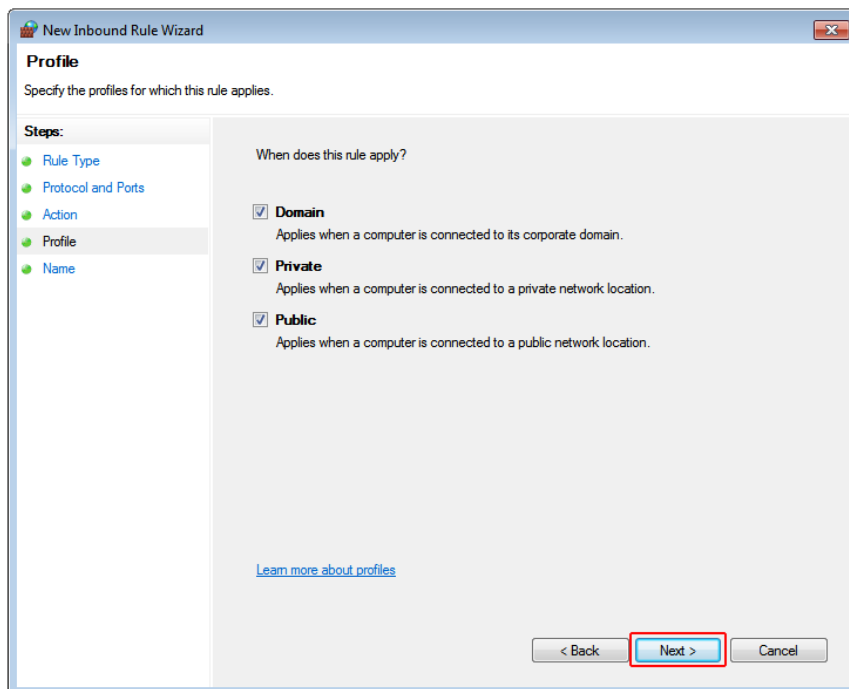
Immotec Systems, Inc.

SQL Server 2008 Installation Document

Select *Allow the connection* and then press *Next*.



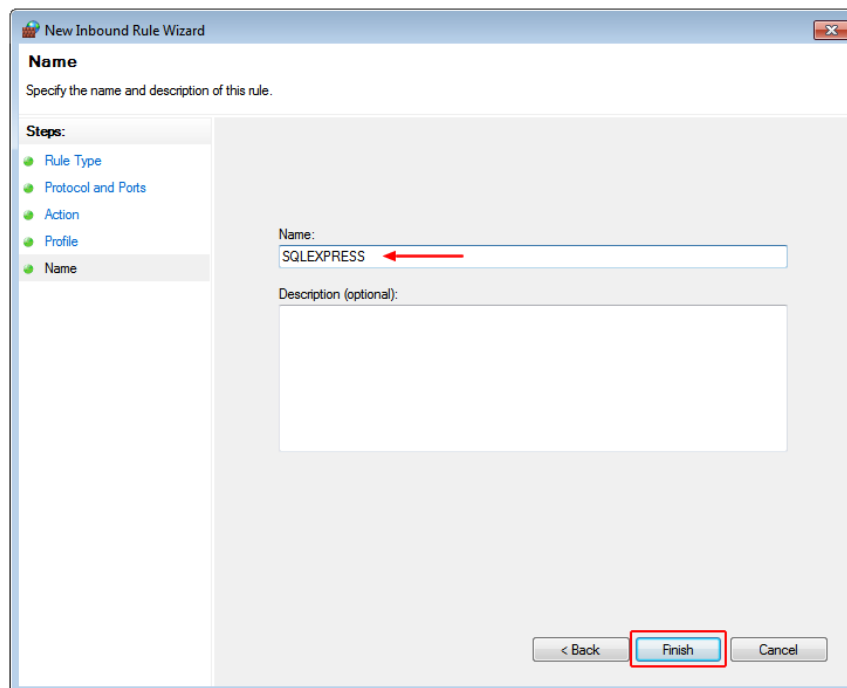
Press *Next*.



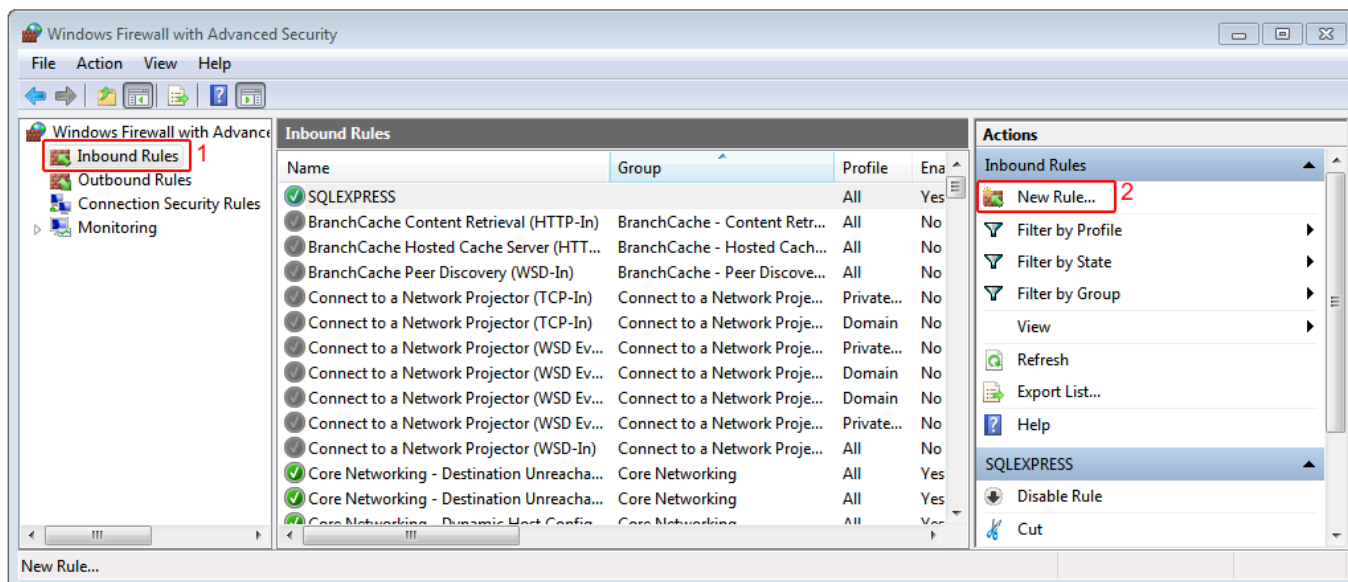
Immotec Systems, Inc.

SQL Server 2008 Installation Document

In the *Name* field, type SQLEXPRESS and press *Finish*.



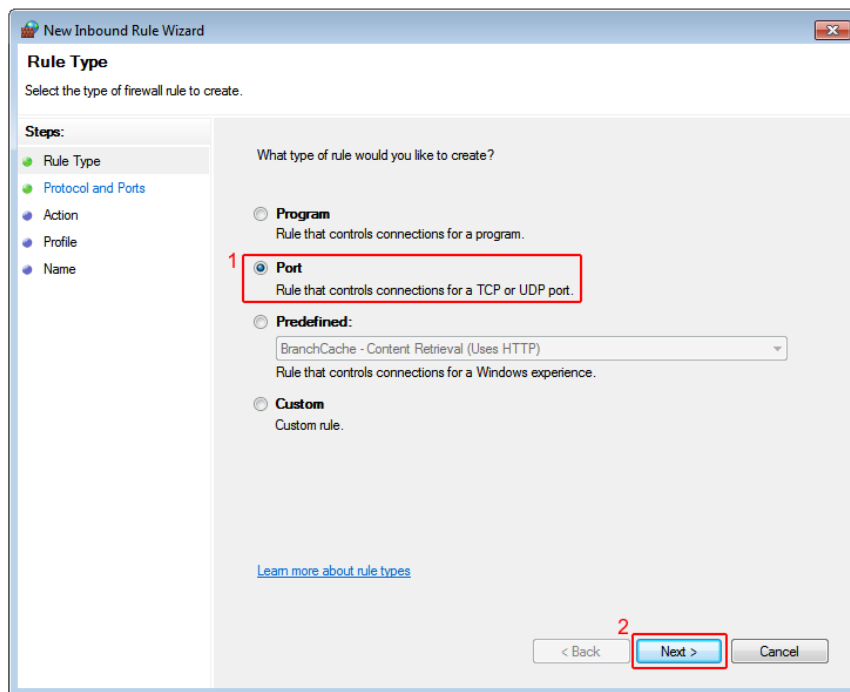
Click *New Rule...* again to add an additional port.



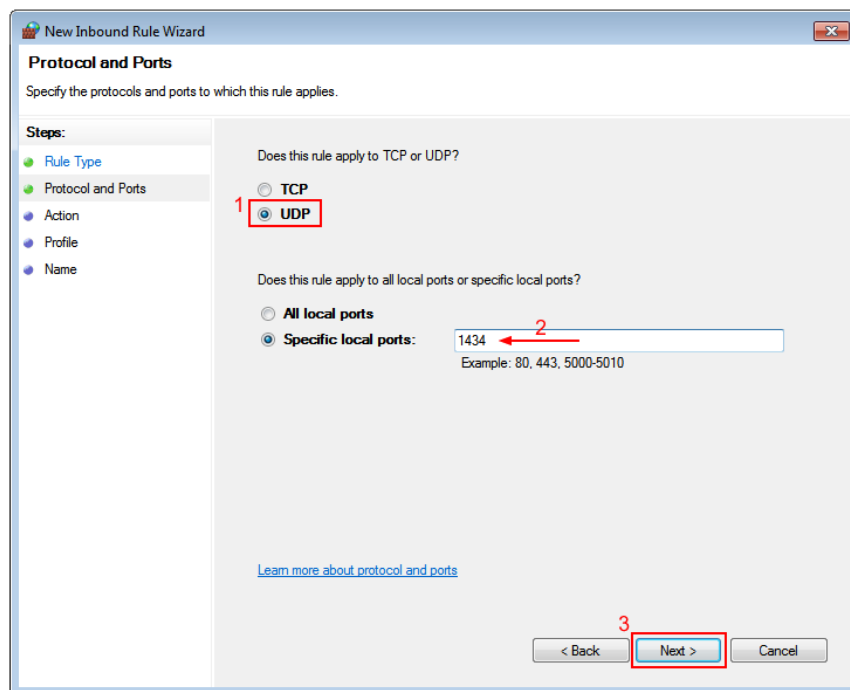
Immotec Systems, Inc.

SQL Server 2008 Installation Document

Select *Port* and click *Next*.



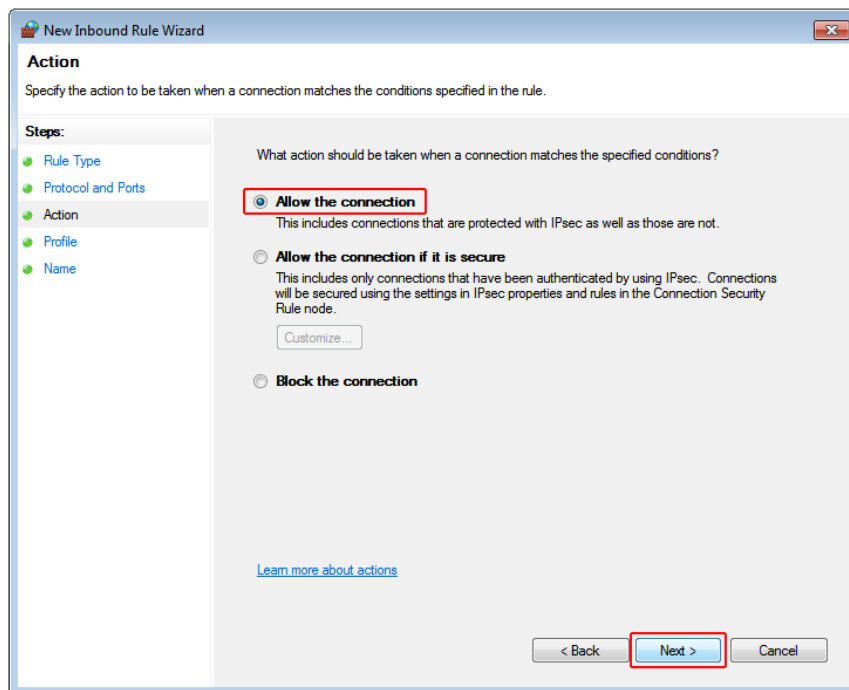
Select *UDP* and Type in the port number 1434, and then press *Next*.



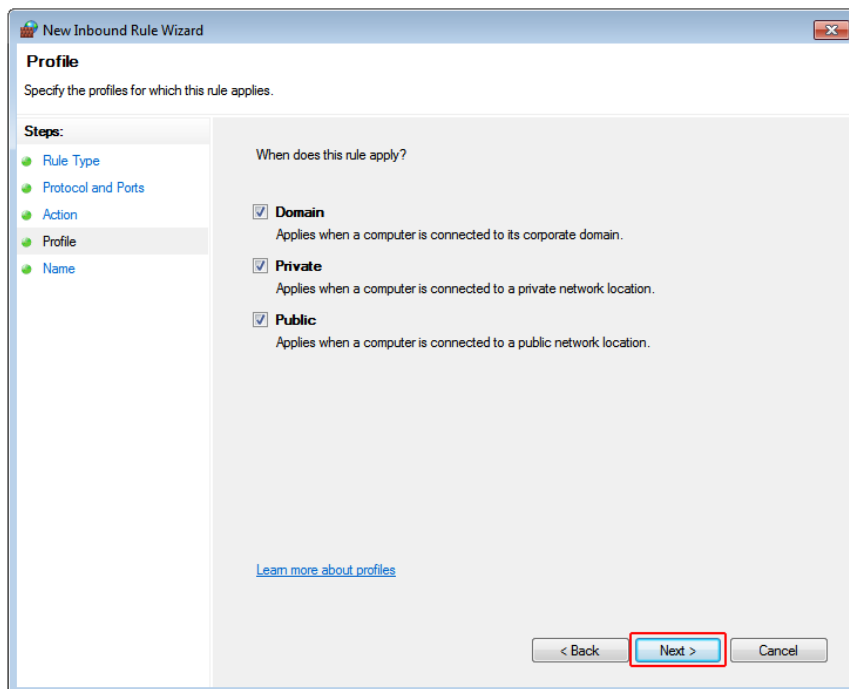
Immotec Systems, Inc.

SQL Server 2008 Installation Document

Select *Allow the connection* and then press *Next*.



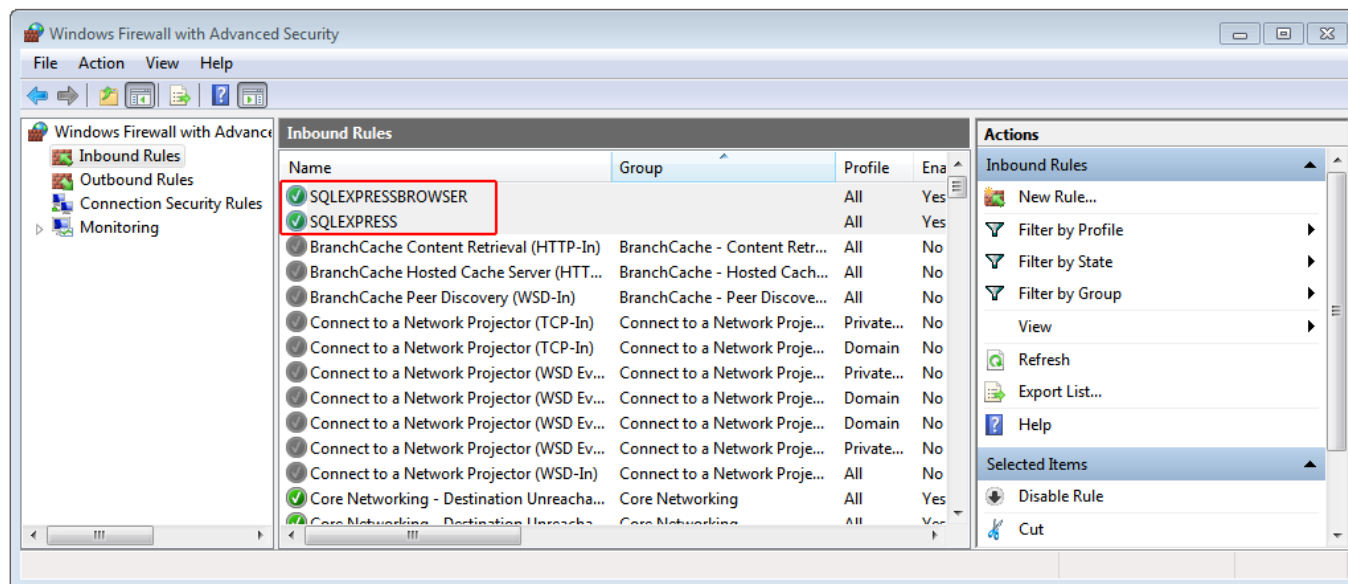
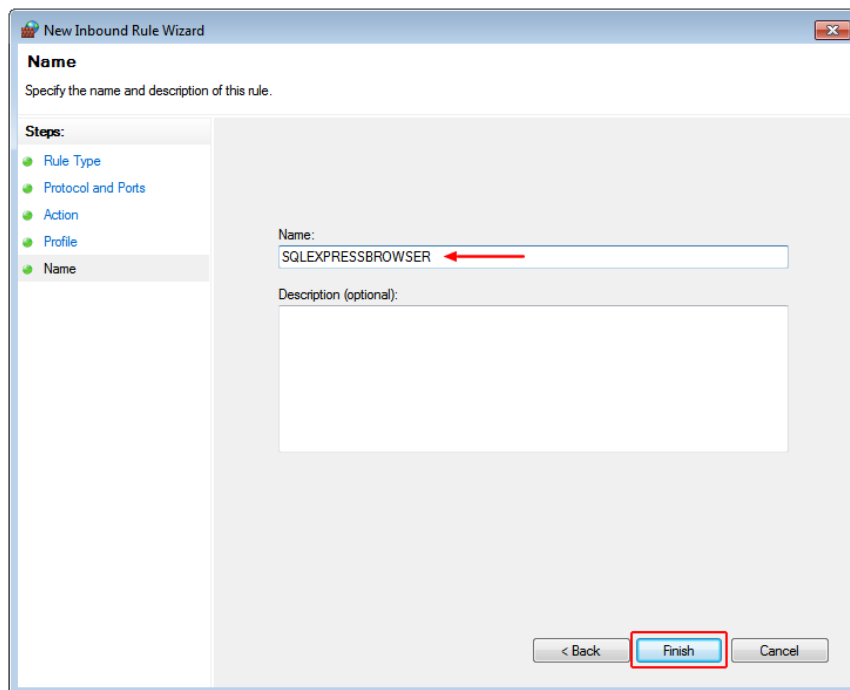
Press *Next*.



Immotec Systems, Inc.

SQL Server 2008 Installation Document

In the *Name* field, type SQLEXPRESSBROWSER and press *Finish*.

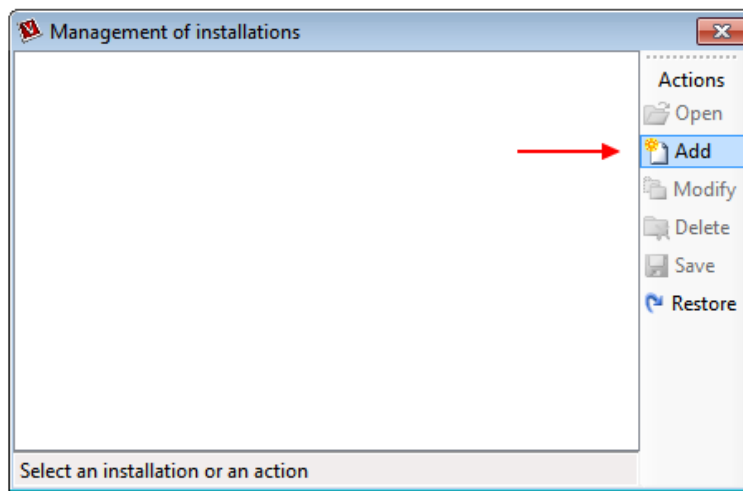


The SQL Server configuration is now complete. You may close all windows.

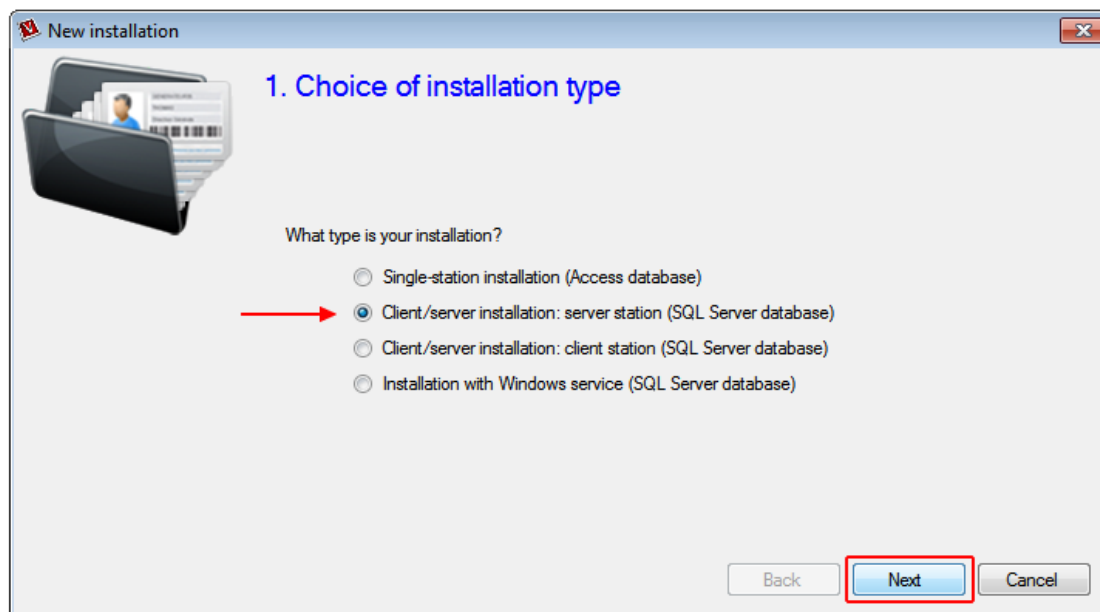
Creating an Installation for Visor 360

From the *Start* menu or your desktop, double click on the *Visor 360* icon, select your language and press *OK*.

In the *Management of installations* window, click on *Add*.



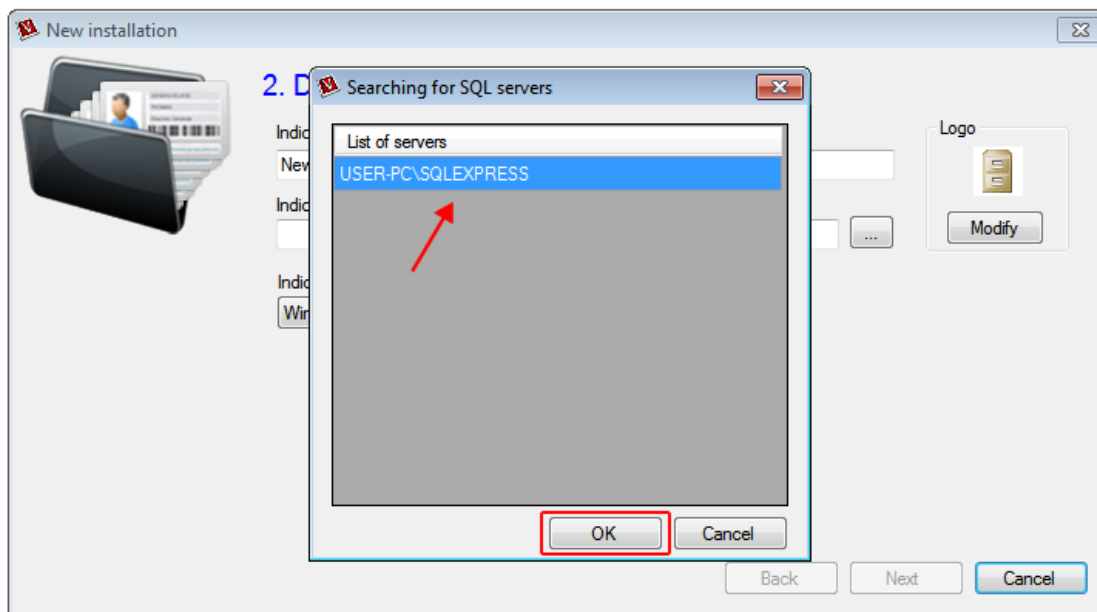
In the type of installation, select *Server station (SQL Server database)* and press *Next*.



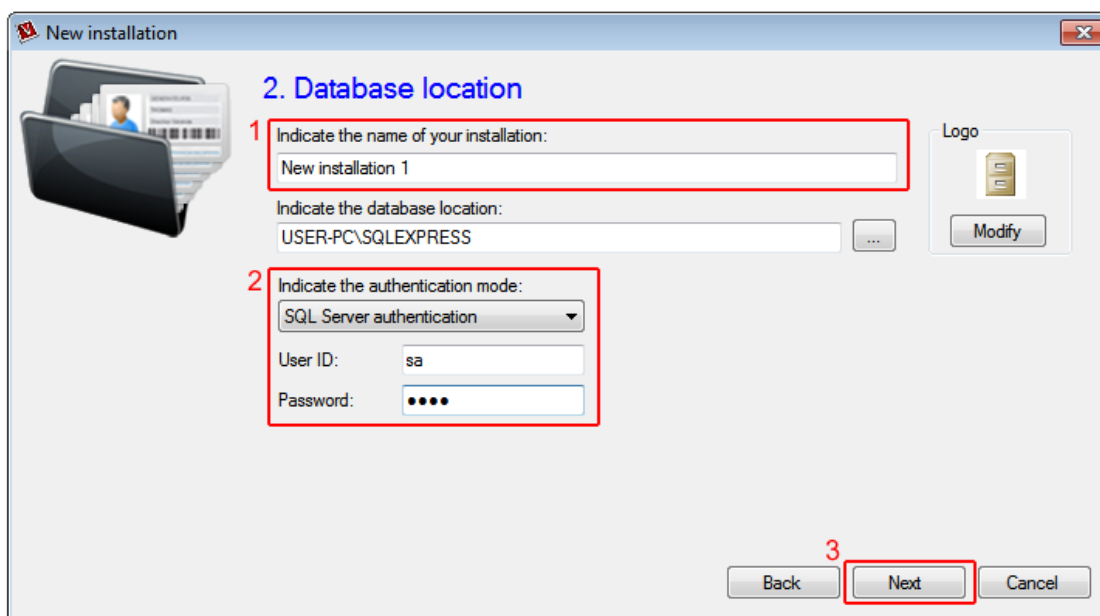
Immotec Systems, Inc.

SQL Server 2008 Installation Document

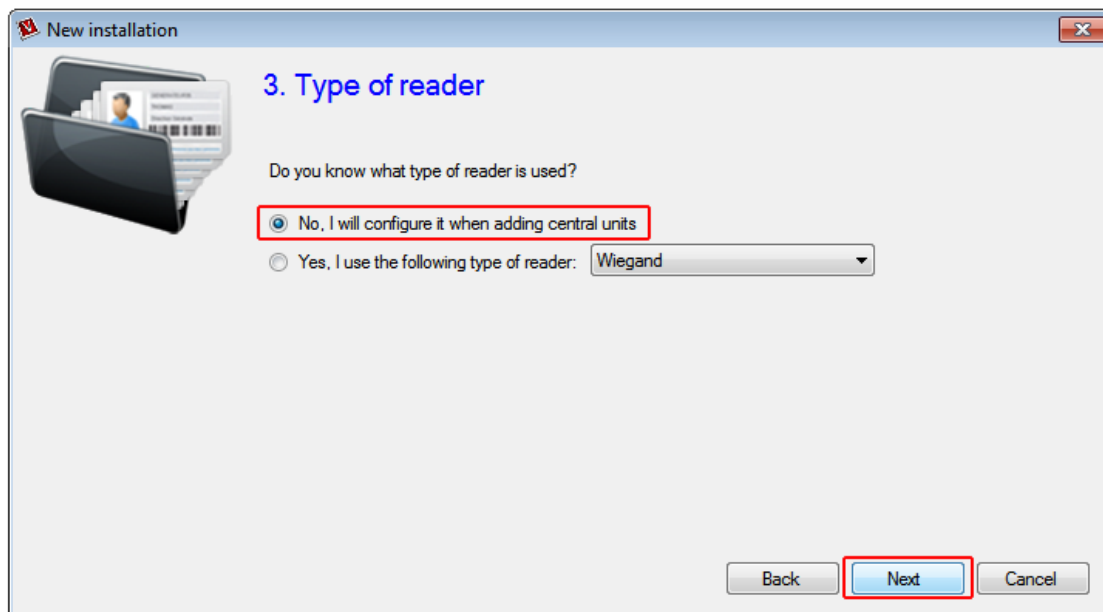
Select the database you have created and press OK.



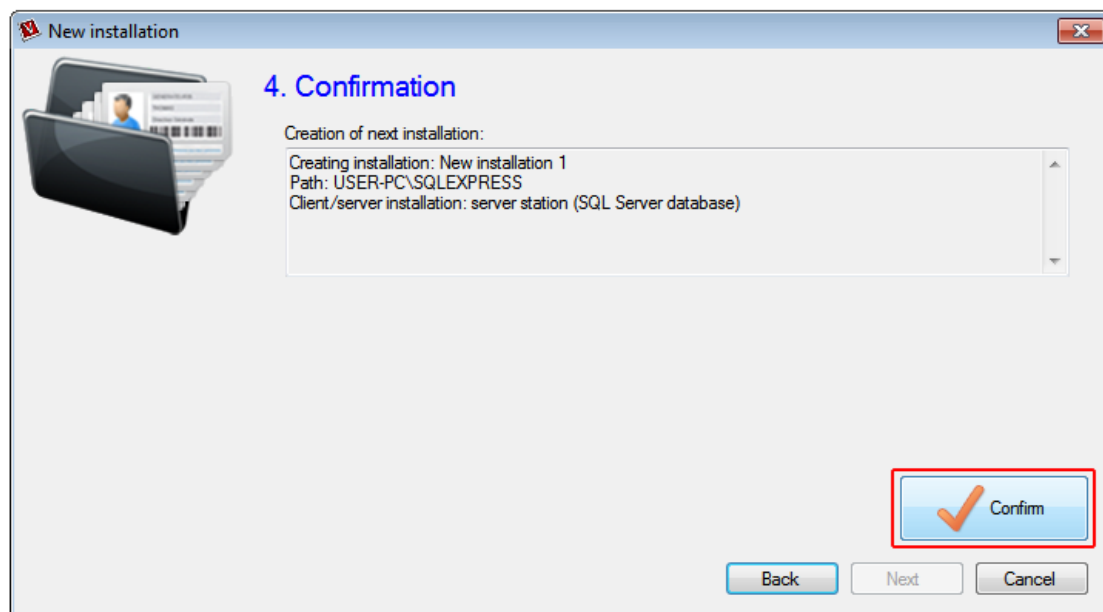
Enter the name of your installation, select the SQL Server authentication mode, Enter Login ("sa" by default) and Password, then click *Next*.



Press *Next*.



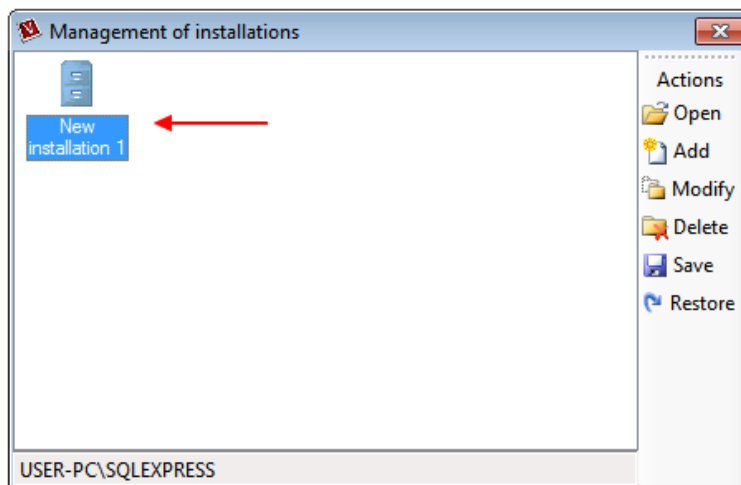
Press *Confirm*.



Immotec Systems, Inc.

SQL Server 2008 Installation Document

Your new Visor 360 installation has been successfully created.



If the SQL Server is on the same computer as Visor 360, proceed without any additional steps.

Otherwise, make sure your computer has proper network access rights to the shared directory accessible by the SQL Server and Visor 360 software.